

C.F.Witt: Suite i F-Dur

1. Entrée

Musical notation for the first staff of '1. Entrée', starting with a treble clef, a key signature of one flat (F major), and a 4/4 time signature. The dynamics are marked *f-mp*.

Musical notation for the second staff of '1. Entrée', starting at measure 6. It includes first and second endings. The dynamics are marked *mp*.

Musical notation for the third staff of '1. Entrée', starting at measure 11. The dynamics are marked *f*.

Musical notation for the fourth staff of '1. Entrée', starting at measure 16. It includes first and second endings.

2. Sarabande

Musical notation for the first staff of '2. Sarabande', starting with a treble clef, a key signature of one flat (F major), and a 3/4 time signature. The dynamics are marked *f-mp*.

Musical notation for the second staff of '2. Sarabande', starting at measure 21.

Musical notation for the third staff of '2. Sarabande', starting at measure 27. It includes markings for *Soli* and *Tutti*.

Musical notation for the fourth staff of '2. Sarabande', starting at measure 33.

3. Menuet

Musical notation for the first staff of '3. Menuet', starting with a treble clef, a key signature of one flat (F major), and a 3/4 time signature. The dynamics are marked *f-p*.

Musical notation for the second staff of '3. Menuet', starting at measure 38. It includes a marking for *Soli*.

Musical notation for the third staff of '3. Menuet', starting at measure 45. It includes a marking for *Tutti*.

Musical notation for the fourth staff of '3. Menuet', starting at measure 52.

4. Bouree

Musical notation for the first system of '4. Bouree'. The piece is in C major, 3/4 time. The first measure is marked *f-p*. The melody consists of eighth and quarter notes with slurs.

Musical notation for the second system of '4. Bouree', starting at measure 62. It features a repeat sign and is marked *mp*. The melody continues with eighth and quarter notes.

Musical notation for the third system of '4. Bouree', starting at measure 66. It is marked *f*. The melody continues with eighth and quarter notes, ending with a repeat sign.

5. Menuet

Musical notation for the first system of '5. Menuet'. The piece is in C major, 3/4 time. It starts at measure 71, marked *Soli* and *mf*. The melody consists of eighth and quarter notes with slurs.

Musical notation for the second system of '5. Menuet', starting at measure 77. It features a repeat sign and is marked *Tutti* and *mp*. The melody continues with eighth and quarter notes.

Musical notation for the third system of '5. Menuet', starting at measure 84. It is marked *f*. The melody continues with eighth and quarter notes.

Musical notation for the fourth system of '5. Menuet', starting at measure 89. The melody continues with eighth and quarter notes, ending with a repeat sign.

C.F.Witt: Suite i F-Dur

1. Entrée

Musical notation for the first staff of '1. Entrée'. It begins with a treble clef, a key signature of one flat (F major), and a 4/4 time signature. The melody starts with a dotted quarter note followed by eighth notes. The dynamic marking *f-mp* is placed below the staff.

Musical notation for the second staff of '1. Entrée'. It features a first ending bracket over measures 6-8 and a second ending bracket over measures 9-10. The dynamic marking *mp* is placed below the staff.

Musical notation for the third staff of '1. Entrée'. It continues the melody with a dynamic marking *f* placed below the staff.

Musical notation for the fourth staff of '1. Entrée'. It features a first ending bracket over measures 16-18 and a second ending bracket over measures 19-20. The staff concludes with a double bar line.

2. Sarabande

Musical notation for the first staff of '2. Sarabande'. It begins with a treble clef, a key signature of one flat, and a 3/4 time signature. The dynamic marking *f-mp* is placed below the staff.

Musical notation for the second staff of '2. Sarabande'. It continues the melody with a double bar line at the end.

Musical notation for the third staff of '2. Sarabande'. It features a *Soli* marking above the first measure and a *Tutti* marking above the eighth measure.

Musical notation for the fourth staff of '2. Sarabande'. It continues the melody with a double bar line at the end.

3. Menuet

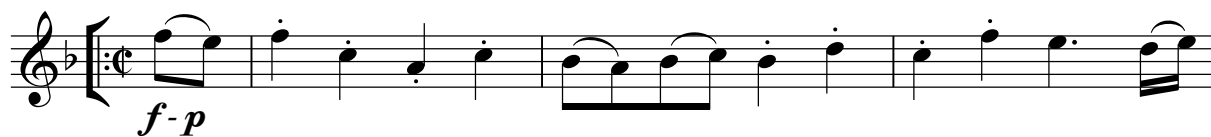
Musical notation for the first staff of '3. Menuet'. It begins with a treble clef, a key signature of one flat, and a 3/4 time signature. The dynamic marking *f-p* is placed below the staff.

Musical notation for the second staff of '3. Menuet'. It features a *Soli* marking above the first measure and a double bar line at the end.

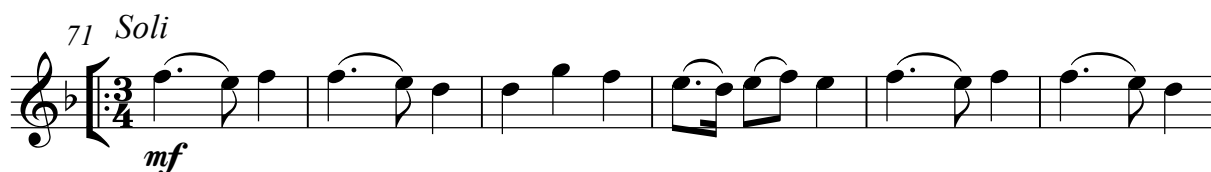
Musical notation for the third staff of '3. Menuet'. It features a *Tutti* marking above the first measure and a double bar line at the end.

Musical notation for the fourth staff of '3. Menuet'. It continues the melody with a double bar line at the end.

4. Bouree



5. Menuet



C.F.Witt: Suite i F-Dur

1. Entrée

Measures 1-5. Dynamic: *f-mp*

Measures 6-10. Dynamic: *mp*

Measures 11-15. Dynamic: *f*

Measures 16-20. First and second endings.

2. Sarabande

Measures 1-5. Time signature: 3/4. Dynamic: *f-mp*

Measures 6-20. End of movement.

27 *Soli*

Tutti

Measures 21-26. End of section.

33

3. Menuet

Measures 1-5. End of movement.

Measures 6-37. Time signature: 3/4. Dynamic: *f-p*

38

Soli

Measures 38-44. End of section.

45

Tutti

Measures 45-51. End of section.

52

Measures 52-56. End of section.

4. Bouree

Musical score for Bouree, measures 56-66. The piece is in G major and common time. It begins with a dynamic marking of *f-p*. Measure 62 is marked with *mp*. Measure 66 is marked with *f*. The score consists of three staves of music.

5. Menuet

Musical score for Menuet, measures 71-89. The piece is in G major and 3/4 time. It begins with a dynamic marking of *mf* and the instruction *Soli*. Measure 77 is marked with *mp* and the instruction *Tutti*. Measure 83 is marked with *f*. The score consists of three staves of music.

C.F.Witt: Suite i F-Dur

1. Entrée

Musical notation for the first staff of '1. Entrée', measures 1-5. The key signature is one sharp (F#) and the time signature is 4/4. The dynamic marking is *f-mp*.

Musical notation for the second staff of '1. Entrée', measures 6-10. It includes first and second endings. The dynamic marking is *mp*.

Musical notation for the third staff of '1. Entrée', measures 11-15. The dynamic marking is *f*.

Musical notation for the fourth staff of '1. Entrée', measures 16-20. It includes first and second endings.

2. Sarabande

Musical notation for the first staff of '2. Sarabande', measures 1-4. The key signature is one sharp (F#) and the time signature is 3/4. The dynamic marking is *f-mp*.

Musical notation for the second staff of '2. Sarabande', measures 5-10.

Musical notation for the third staff of '2. Sarabande', measures 11-16. The section is marked *Soli* and *Tutti*.

Musical notation for the fourth staff of '2. Sarabande', measures 17-22.

3. Menuet

Musical notation for the first staff of '3. Menuet', measures 1-4. The key signature is one sharp (F#) and the time signature is 3/4. The dynamic marking is *f-p*.

Musical notation for the second staff of '3. Menuet', measures 5-10. The section is marked *Soli*.

Musical notation for the third staff of '3. Menuet', measures 11-16. The section is marked *Tutti*.

Musical notation for the fourth staff of '3. Menuet', measures 17-22.

4. Bouree

Musical score for Bouree, measures 57-66. The piece is in G major and common time. Measure 57 starts with a dynamic of *f-p*. Measure 62 has a dynamic of *mp*. Measure 66 has a dynamic of *f*. The score consists of six staves of music.

5. Menuet

Musical score for Menuet, measures 71-89. The piece is in G major and 3/4 time. Measure 71 is marked *Soli* with a dynamic of *mf*. Measure 77 is marked *Tutti* with a dynamic of *mp*. Measure 83 has a dynamic of *f*. The score consists of six staves of music.

C.F.Witt: Suite i F-Dur

1. Entrée

Musical score for the first movement, "Entrée". It is written in 4/4 time and F major. The score consists of three staves of music. The first staff begins with a dynamic marking of *f-mp*. The second staff contains a first and second ending. The third staff also contains a first and second ending. The piece concludes with a double bar line.

2. Sarabande

Musical score for the second movement, "Sarabande". It is written in 3/4 time and F major. The score consists of two staves of music. The first staff begins with a dynamic marking of *f-mp*. The second staff features a *Soli* section followed by a *Tutti* section. The piece concludes with a double bar line.

3. Menuet

Musical score for the third movement, "Menuet". It is written in 3/4 time and F major. The score consists of three staves of music. The first staff begins with a dynamic marking of *f-p* and a *Soli* marking. The second staff continues the melody. The third staff features a *Tutti* marking. The piece concludes with a double bar line.

4. Bouree

Musical notation for measures 48-61 of the Bouree. The key signature is one sharp (F#) and the time signature is common time (C). The music consists of a series of eighth notes. The dynamic marking *f-p* is present at the beginning.

Musical notation for measures 62-65 of the Bouree. The key signature is one sharp (F#) and the time signature is common time (C). The music consists of a series of eighth notes. A repeat sign is present at the start of measure 63. The dynamic marking *mp* is present.

Musical notation for measures 66-70 of the Bouree. The key signature is one sharp (F#) and the time signature is common time (C). The music consists of a series of eighth notes. The dynamic marking *f* is present at the beginning. The piece ends with a double bar line and repeat dots.

5. Menuet

71 *Soli*

Musical notation for measures 71-76 of the Menuet. The key signature is one sharp (F#) and the time signature is 3/4. The music consists of a series of eighth notes. The dynamic marking *mf* is present at the beginning.

Musical notation for measures 77-82 of the Menuet. The key signature is one sharp (F#) and the time signature is 3/4. The music consists of eighth notes with some rests. A repeat sign is present at the start of measure 78. The dynamic marking *mp* is present. The word *Tutti* is written above the staff.

Musical notation for measures 83-88 of the Menuet. The key signature is one sharp (F#) and the time signature is 3/4. The music consists of eighth notes. The dynamic marking *f* is present at the beginning.

Musical notation for measures 89-94 of the Menuet. The key signature is one sharp (F#) and the time signature is 3/4. The music consists of eighth notes with some rests. The piece ends with a double bar line and repeat dots.

C.F. Witt: Suite i F-Dur

1. Entrée

f-mp

5

1. 2.

10 *mp*

14 *f*

1. 2.

19 2. Sarabande

f-mp

24 *Soli*

29 *Tutti*

35 3. Menuet

f-p

41 *Soli*

48 *Tutti*

53

4. Boureé

Musical score for Boureé, measures 57-67. The piece is in G major and common time. It begins with a dynamic marking of *f-p*. Measure 62 features a dynamic marking of *mp* and a repeat sign. The piece concludes with a dynamic marking of *f*.

5. Menuet

Musical score for Menuet, measures 71-89. The piece is in G major and 3/4 time. It begins with a dynamic marking of *mf* and the instruction *Soli*. Measure 77 features a dynamic marking of *mp* and the instruction *Tutti*. The piece concludes with a dynamic marking of *f*.

C.F.Witt: Suite i F-Dur

1. Entréé

Musical notation for the first staff of '1. Entréé'. It begins with a treble clef, a key signature of one sharp (F#), and a 4/4 time signature. The dynamics are marked *f-mp*. The melody consists of eighth and sixteenth notes.

Musical notation for the second staff of '1. Entréé'. It features a first ending bracket (1.) and a second ending bracket (2.). The dynamics are marked *mp*. The melody continues with eighth and sixteenth notes.

Musical notation for the third staff of '1. Entréé'. It includes a first ending bracket (1.) and a second ending bracket (2.). The dynamics are marked *< f*. The melody continues with eighth and sixteenth notes.

2. Sarabande

Musical notation for the first staff of '2. Sarabande'. It begins with a treble clef, a key signature of one sharp (F#), and a 3/4 time signature. The dynamics are marked *f-mp*. The melody consists of quarter and eighth notes.

Musical notation for the second staff of '2. Sarabande'. It features a *Soli* marking above the staff. The melody continues with quarter and eighth notes.

Musical notation for the third staff of '2. Sarabande'. It features a *Tutti* marking above the staff. The melody continues with quarter and eighth notes.

3. Menuet

Musical notation for the first staff of '3. Menuet'. It begins with a treble clef, a key signature of one sharp (F#), and a 3/4 time signature. The dynamics are marked *f-p*. The melody consists of quarter and eighth notes.

Musical notation for the second staff of '3. Menuet'. It features a *Soli* marking above the staff. The melody continues with quarter and eighth notes.

Musical notation for the third staff of '3. Menuet'. It features a *Tutti* marking above the staff. The melody continues with quarter and eighth notes.

Musical notation for the fourth staff of '3. Menuet'. The melody concludes with a double bar line and a repeat sign.

4. Bouree

Musical score for Bouree, measures 62-67. The music is in treble clef with a key signature of two sharps (F# and C#) and a common time signature (C). Measure 62 starts with a dynamic marking of *f-p*. A repeat sign is present at the beginning of measure 63. Measure 64 has a dynamic marking of *mp*. Measure 65 has a dynamic marking of *f*. Measure 66 has a dynamic marking of *f*. Measure 67 ends with a double bar line and repeat dots.

5. Menuet

Musical score for Menuet, measures 71-89. The music is in treble clef with a key signature of two sharps (F# and C#) and a 3/4 time signature. Measure 71 starts with a dynamic marking of *mf* and is marked *Soli*. Measure 76 has a dynamic marking of *mp* and is marked *Tutti*. Measure 83 has a dynamic marking of *f*. Measure 89 ends with a double bar line and repeat dots.

C.F.Witt: Suite i F-Dur

1. Entrée

6 *f-mp* *mp* *f*

19 2. Sarabande

24 *f-mp* *Soli* *Tutti*

35 3. Menuet

40 *f-p* *Soli* *Tutti*

4. Bouree

Musical score for Bassoon, 4. Bouree. Measures 62-67. The score is in bass clef, key of B-flat major, and common time. Measure 62 starts with a dynamic marking of *f-p*. Measure 63 has a dynamic marking of *mp*. Measure 67 ends with a dynamic marking of *f*.

5. Menuet

Musical score for Bassoon, 5. Menuet. Measures 71-90. The score is in bass clef, key of B-flat major, and 3/4 time. Measure 71 is marked *Soli* and *mf*. Measure 77 is marked *Tutti* and *mp*. Measure 85 has a dynamic marking of *f*. Measure 90 ends with a double bar line and repeat sign.

C.F.Witt: Suite i F-Dur

1. Entrée

Musical notation for the first staff of '1. Entrée', starting at measure 1. The key signature is one sharp (F#) and the time signature is 4/4. The dynamics are marked *f-mp*.

Musical notation for the second staff of '1. Entrée', starting at measure 6. It includes first and second endings. The dynamics are marked *mp*.

Musical notation for the third staff of '1. Entrée', starting at measure 11. The dynamics are marked *f*.

Musical notation for the fourth staff of '1. Entrée', starting at measure 16. It includes first and second endings.

Musical notation for the start of '2. Sarabande', starting at measure 21. The key signature is one sharp (F#) and the time signature is 3/4. The dynamics are marked *f-mp*.

Musical notation for the fifth staff of '2. Sarabande', starting at measure 21.

Musical notation for the sixth staff of '2. Sarabande', starting at measure 27. It includes *Soli* and *Tutti* markings.

Musical notation for the seventh staff of '2. Sarabande', starting at measure 33.

Musical notation for the start of '3. Menuet', starting at measure 38. The key signature is one sharp (F#) and the time signature is 3/4. The dynamics are marked *f-p*.

Musical notation for the eighth staff of '3. Menuet', starting at measure 38. It includes a *Soli* marking.

Musical notation for the ninth staff of '3. Menuet', starting at measure 45. It includes a *Tutti* marking.

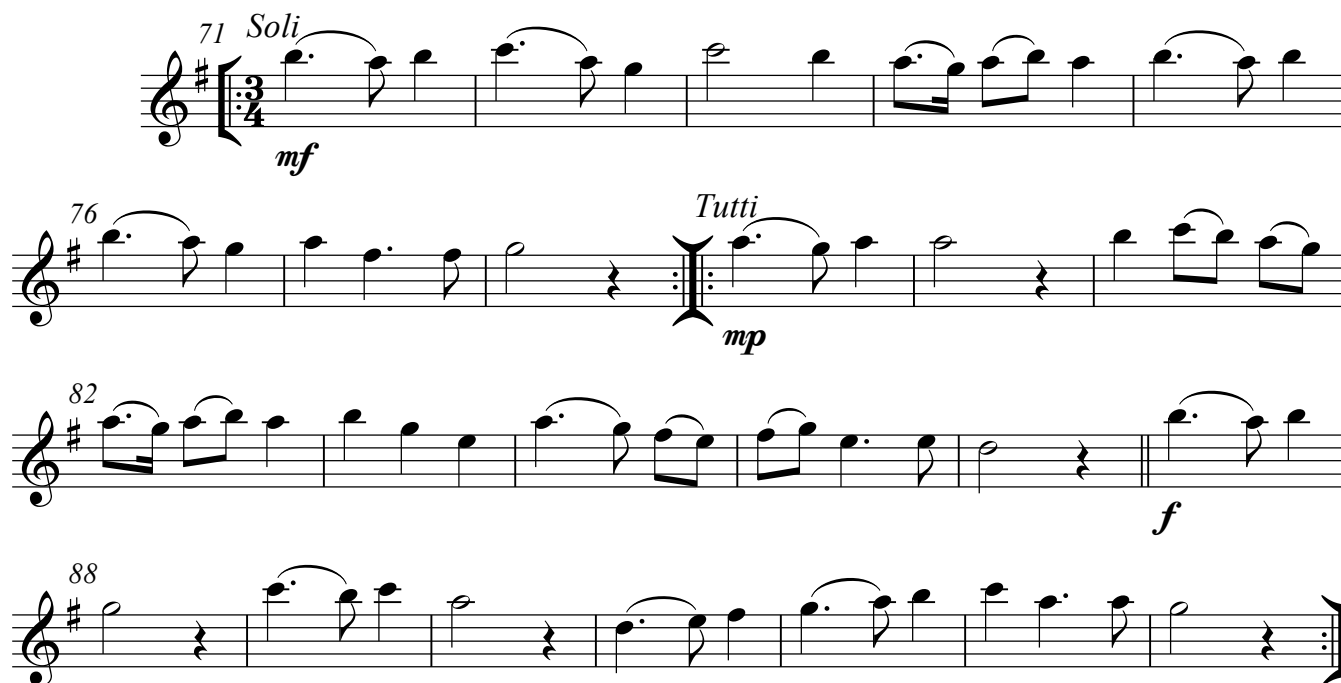
Musical notation for the tenth staff of '3. Menuet', starting at measure 52.

4. Bouree



Musical score for the Bouree, measures 58 to 65. The piece is in G major and common time. The first staff (measures 58-61) is marked *f-p*. The second staff (measures 62-65) is marked *mp*. The third staff (measures 66-65) is marked *f*. The music consists of eighth and sixteenth notes with various articulations.

5. Menuet



Musical score for the Menuet, measures 71 to 88. The piece is in G major and 3/4 time. The first staff (measures 71-75) is marked *Soli* and *mf*. The second staff (measures 76-81) is marked *Tutti* and *mp*. The third staff (measures 82-87) is marked *f*. The fourth staff (measures 88-88) is marked *f*. The music features eighth and sixteenth notes with slurs and accents.

C.F.Witt: Suite i F-Dur

1. Entrée

Musical notation for the first staff of '1. Entrée'. It is in treble clef, F major, and 4/4 time. The notes are: F4, G4, A4, B4, C5, B4, A4, G4, F4, G4, A4, B4, C5, B4, A4, G4, F4. Dynamics: *f-mp*.

Musical notation for the second staff of '1. Entrée'. It starts with a measure rest, then a quarter note F4. A first ending bracket covers measures 7-8 (F4, G4, A4, B4, C5, B4, A4, G4, F4). A second ending bracket covers measures 9-10 (F4, G4, A4, B4, C5, B4, A4, G4, F4). Dynamics: *mp*.

Musical notation for the third staff of '1. Entrée'. It starts with a measure rest, then a quarter note F4. A first ending bracket covers measures 13-14 (F4, G4, A4, B4, C5, B4, A4, G4, F4). A second ending bracket covers measures 15-16 (F4, G4, A4, B4, C5, B4, A4, G4, F4). Dynamics: *< f*.

2. Sarabande

Musical notation for the first staff of '2. Sarabande'. It is in treble clef, F major, and 3/4 time. The notes are: F4, G4, A4, B4, C5, B4, A4, G4, F4, G4, A4, B4, C5, B4, A4, G4, F4. Dynamics: *f-mp*.

Musical notation for the second staff of '2. Sarabande'. It starts with a measure rest, then a quarter note F4. A first ending bracket covers measures 26-27 (F4, G4, A4, B4, C5, B4, A4, G4, F4). A second ending bracket covers measures 28-29 (F4, G4, A4, B4, C5, B4, A4, G4, F4). Dynamics: *Soli* and *Tutti*.

3. Menuet

Musical notation for the first staff of '3. Menuet'. It is in treble clef, F major, and 3/4 time. The notes are: F4, G4, A4, B4, C5, B4, A4, G4, F4, G4, A4, B4, C5, B4, A4, G4, F4. Dynamics: *f-p*.

Musical notation for the second staff of '3. Menuet'. It starts with a measure rest, then a quarter note F4. A first ending bracket covers measures 38-39 (F4, G4, A4, B4, C5, B4, A4, G4, F4). A second ending bracket covers measures 40-41 (F4, G4, A4, B4, C5, B4, A4, G4, F4). Dynamics: *Soli*.

Musical notation for the third staff of '3. Menuet'. It starts with a measure rest, then a quarter note F4. A first ending bracket covers measures 46-47 (F4, G4, A4, B4, C5, B4, A4, G4, F4). A second ending bracket covers measures 48-49 (F4, G4, A4, B4, C5, B4, A4, G4, F4). Dynamics: *Tutti*.

Musical notation for the fourth staff of '3. Menuet'. It starts with a measure rest, then a quarter note F4. A first ending bracket covers measures 52-53 (F4, G4, A4, B4, C5, B4, A4, G4, F4). A second ending bracket covers measures 54-55 (F4, G4, A4, B4, C5, B4, A4, G4, F4). Dynamics: *Tutti*.

4. Bouree

Musical score for 4. Bouree, measures 56-65. The piece is in G major and common time. It begins with a first ending bracket at measure 56, marked *f-p*. The melody consists of quarter notes: G4, A4, B4, C5, B4, A4, G4, F#4, E4, D4, C4. A second ending bracket starts at measure 62, marked *mp*, with a repeat sign. The melody continues: G4, A4, B4, C5, B4, A4, G4, F#4, E4, D4, C4. The piece concludes at measure 66, marked *f*.

5. Menuet

Musical score for 5. Menuet, measures 71-88. The piece is in G major and 3/4 time. It begins at measure 71, marked *Soli* and *mf*. The melody consists of quarter notes: G4, A4, B4, C5, B4, A4, G4, F#4, E4, D4, C4. At measure 76, there is a first ending bracket marked *Tutti* and *mp*. The melody continues: G4, A4, B4, C5, B4, A4, G4, F#4, E4, D4, C4. At measure 82, there is a second ending bracket marked *f*. The melody continues: G4, A4, B4, C5, B4, A4, G4, F#4, E4, D4, C4. The piece concludes at measure 88.

C.F. Witt: Suite i F-Dur

1. Entrée

Musical notation for the first staff of '1. Entrée', measures 1-5. The key signature has one sharp (F#) and the time signature is 4/4. The dynamics are marked *f-mp*.

Musical notation for the second staff of '1. Entrée', measures 6-10. It includes first and second endings. The dynamics are marked *mp*.

Musical notation for the third staff of '1. Entrée', measures 11-15. The dynamics are marked *f*.

Musical notation for the fourth staff of '1. Entrée', measures 16-20. It includes first and second endings.

2. Sarabande

Musical notation for the first staff of '2. Sarabande', measures 1-4. The key signature has one sharp (F#) and the time signature is 3/4. The dynamics are marked *f-mp*.

Musical notation for the second staff of '2. Sarabande', measures 5-10.

Musical notation for the third staff of '2. Sarabande', measures 11-16. The first part is marked *Soli* and the second part is marked *Tutti*.

Musical notation for the fourth staff of '2. Sarabande', measures 17-20.

3. Menuet

Musical notation for the first staff of '3. Menuet', measures 1-4. The key signature has one sharp (F#) and the time signature is 3/4. The dynamics are marked *f-p*.

Musical notation for the second staff of '3. Menuet', measures 5-10. The section is marked *Soli*.

Musical notation for the third staff of '3. Menuet', measures 11-16. The section is marked *Tutti*.

Musical notation for the fourth staff of '3. Menuet', measures 17-20.

4. Bouree

f-p

62 *mp*

66 *f*

5. Menuet

71 *Soli* *mf*

76 *Tutti* *mp*

82 *f*

88

C.F. Witt: Suite i F-Dur

1. Entree

Musical notation for the first staff of '1. Entree'. It begins with a treble clef, a key signature of one sharp (F#), and a 4/4 time signature. The melody starts with a half note F#4, followed by quarter notes G4, A4, B4, and C5. The dynamic marking is *f-mp*.

Musical notation for the second staff of '1. Entree'. It starts with a measure rest, followed by a half note F#4. A first ending bracket covers measures 5 and 6, and a second ending bracket covers measures 7 and 8. The dynamic marking is *mp*.

Musical notation for the third staff of '1. Entree'. It starts with a measure rest, followed by a half note F#4. A first ending bracket covers measures 11 and 12. The dynamic marking is *< f*.

2. Sarabande

Musical notation for the first staff of '2. Sarabande'. It begins with a treble clef, a key signature of one sharp (F#), and a 3/4 time signature. The melody starts with a half note F#4. The dynamic marking is *f-mp*.

Musical notation for the second staff of '2. Sarabande'. It starts with a measure rest, followed by a half note F#4. A first ending bracket covers measures 23 and 24. The dynamic marking is *Soli*.

3. Menuet

Musical notation for the first staff of '3. Menuet'. It begins with a treble clef, a key signature of one sharp (F#), and a 3/4 time signature. The melody starts with a half note F#4. The dynamic marking is *f-p*.

Musical notation for the second staff of '3. Menuet'. It starts with a measure rest, followed by a half note F#4. A first ending bracket covers measures 36 and 37. The dynamic marking is *Soli*.

Musical notation for the third staff of '3. Menuet'. It starts with a measure rest, followed by a half note F#4. The dynamic marking is *Soli*.

Musical notation for the fourth staff of '3. Menuet'. It starts with a measure rest, followed by a half note F#4. The dynamic marking is *Soli*.

4. Bouree

Musical score for 4. Bouree, Baritone Saxophone part. The score is written in treble clef with a key signature of two sharps (F# and C#) and a common time signature (C). The piece begins with a dynamic marking of *f-p*. The first line of music (measures 56-61) ends with a repeat sign. The second line (measures 62-66) begins with a dynamic marking of *mp* and ends with a dynamic marking of *f*. The third line (measures 67-70) concludes the piece with a final cadence.

5. Menuet

Musical score for 5. Menuet, Baritone Saxophone part. The score is written in treble clef with a key signature of two sharps (F# and C#) and a 3/4 time signature. The piece begins with a dynamic marking of *mf*. The first line (measures 71-76) is marked *Soli*. The second line (measures 77-82) begins with a dynamic marking of *mp* and is marked *Tutti*. The third line (measures 83-88) ends with a dynamic marking of *f*. The fourth line (measures 89-92) concludes the piece with a final cadence.

C.F.Witt: Suite i F-Dur

1. Entrée

f-mp

mp

f

f-mp

2. Sarabande

f-mp

f-mp

Soli *Tutti*

Soli *Tutti*

3. Menuet

f-p

Soli *Tutti*

Soli *Tutti*

Soli *Tutti*

4. Bouree

f-p

62 *mp*

66 *f*

5. Menuet

71 *Soli* *mf*

76 *Tutti* *mp*

82 *f*

88

C.F.Witt: Suite i F-Dur

1. Entrée

f-mp

mp

f

f-mp

2. Sarabande

f-mp

Soli *Tutti*

3. Menuet

f-p

Soli *Tutti*

4. Bouree

Musical score for 4. Bouree, measures 57-65. The piece is in 3/4 time and B-flat major. It begins with a dynamic marking of *f-p*. Measure 62 is marked with a repeat sign and a dynamic of *mp*. Measure 66 is marked with a dynamic of *f*.

5. Menuet

Musical score for 5. Menuet, measures 71-88. The piece is in 3/4 time and B-flat major. It begins with a dynamic marking of *mf* and the instruction *Soli*. Measure 76 is marked with a dynamic of *mp* and the instruction *Tutti*. Measure 82 is marked with a dynamic of *f*. Measure 88 ends with a repeat sign.

C.F.Witt: Suite i F-Dur

1. Entrée

1. *f-mp*

7. *mp*

13. *< f*

2. Sarabande

19. *f-mp*

26. *Soli* *Tutti*

3. Menuet

33. *f-p*

38. *Soli*

46. *Tutti*

52.

4. Bouree

Musical score for 4. Bouree, measures 58-65. The piece is in 3/4 time and B-flat major. It begins with a dynamic marking of *f-p*. Measure 62 is marked with *mp*. Measure 66 is marked with *f*. The score consists of three staves of music.

5. Menuet

Musical score for 5. Menuet, measures 71-88. The piece is in 3/4 time and B-flat major. It begins with a dynamic marking of *mf* and the instruction *Soli*. Measure 76 is marked with *Tutti* and *mp*. Measure 82 is marked with *f*. Measure 88 is marked with *f*. The score consists of four staves of music.

C.F.Witt: Suite i F-Dur

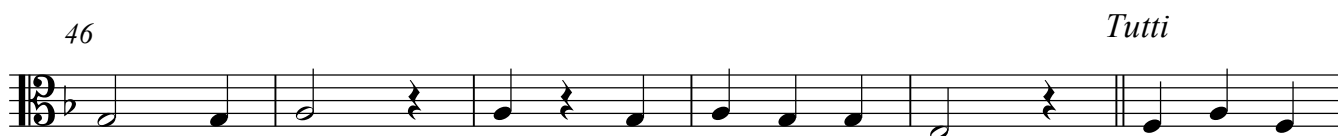
1. Entrée



19 2. Sarabande



3. Menuet



4. Bouree

Musical score for Viola, 4. Bouree. The score consists of three staves of music. The first staff starts at measure 58 and ends at measure 61, marked *f-p*. The second staff starts at measure 62 and ends at measure 65, marked *mp*. The third staff starts at measure 66 and ends at measure 69, marked *f*. The key signature is one flat (B-flat) and the time signature is common time (C).

5. Menuet

Musical score for Viola, 5. Menuet. The score consists of three staves of music. The first staff starts at measure 71 and ends at measure 76, marked *mf* and labeled *Soli*. The second staff starts at measure 77 and ends at measure 82, marked *mp* and labeled *Tutti*. The third staff starts at measure 83 and ends at measure 89, marked *f*. The key signature is one flat (B-flat) and the time signature is 3/4.

C.F.Witt: Suite i F-Dur

1. Entrée

5

10

15

f-mp

mp

f

2. Sarabande

19

25

f-mp

Soli

Tutti

3. Menuet

32

38

45

52

f-p

Soli

Tutti

4. Bouree

Musical score for 4. Bouree, measures 58-68. The piece is in C major, 3/4 time. Measure 58 starts with a dynamic of *f-p*. Measure 62 has a dynamic of *mp*. Measure 67 has a dynamic of *f*. The score includes repeat signs and first/second endings.

5. Menuet

Musical score for 5. Menuet, measures 71-89. The piece is in C major, 3/4 time. Measure 71 is marked *Soli* with a dynamic of *mf*. Measure 77 is marked *Tutti* with a dynamic of *mp*. Measure 83 has a dynamic of *f*. The score includes repeat signs and first/second endings.

C.F.Witt: Suite i F-Dur

1. Entrée

Musical notation for the first staff of '1. Entrée', starting at measure 1. The key signature is one flat (F major), and the time signature is 4/4. The dynamics are marked *f-mp*.

Musical notation for the second staff of '1. Entrée', starting at measure 5. It includes first and second endings. The dynamics are marked *mp*.

Musical notation for the third staff of '1. Entrée', starting at measure 11. The dynamics are marked *< f*.

Musical notation for the fourth staff of '1. Entrée', starting at measure 17. It includes first and second endings.

2. Sarabande

Musical notation for the first staff of '2. Sarabande', starting at measure 22. The key signature is one flat (F major), and the time signature is 3/4. The dynamics are marked *f-mp*.

Musical notation for the second staff of '2. Sarabande', starting at measure 29. The dynamics are marked *Soli*.

Musical notation for the third staff of '2. Sarabande', starting at measure 35. The dynamics are marked *Tutti*.

3. Menuet

Musical notation for the first staff of '3. Menuet', starting at measure 41. The key signature is one flat (F major), and the time signature is 3/4. The dynamics are marked *f-p*.

Musical notation for the second staff of '3. Menuet', starting at measure 48. The dynamics are marked *Soli*.

Musical notation for the third staff of '3. Menuet', starting at measure 53. The dynamics are marked *Tutti*.

Musical notation for the fourth staff of '3. Menuet', starting at measure 59. The piece concludes with a double bar line and repeat sign.

4. Bouree

58 *f-p*

62 *mp* *f*

67

5. Menuet

71 *Soli* *mf*

77 *Tutti* *mp*

83 *f*

89