

# Nadja

This arrangement is based on S.A.'s own. Soloes are played before C = Coda. Use Svends Blowing Chords

Svend Asmussen

Violin 1

Violin 2

Piano

*mp* *simile*

Dm /C /B Bb Dm/A Bb/Ab A/G A Dm /C /B Bb A Bb/E

8 **A**

Vln 1

Vln 2

Pno

A N.C. Dm/B Bb Dm/A Gm7 Dm/F E $\emptyset$  Dm Dm /F Dm N.C. E13<sup>(9)</sup> E7<sup>(9)</sup> A7 E7

16

Vln 1

Vln 2

Pno

A7 Dm C Gm9 C Bb/Ab Gm7 C11 F A7/E Dm /C Db/B C/Bb Bb Am7 A11 G11 G/F Eb $\Delta$

1. 2. **B**

24

Vln 1

Vln 2

Pno

Dm N.C. Dm N.C. Gm D+ Gm7 C13<sup>(9)</sup> C $\emptyset$  Dm A+ Dm7 Am7 Bb/G# A E7<sup>(9)</sup> A7 Dm A7

32

Vln 1

Vln 2

Pno

Dm A7 D7<sup>(9)</sup> Gm Am Gm D7 Gm E7<sup>(9)</sup> E7 F<sup>#</sup> E+7 Eb13 D7<sup>(9)</sup> Gm D+ Gm7 C13<sup>(9)</sup> C<sup>#</sup>

40

**A**

Vln 1

Vln 2

Pno

Dm Bb7 A N.C. Dm/Bb Dm/A Gm7 Dm/F E<sup>o</sup> Dm Dm F Dm N.C. E7<sup>(9)</sup> E7<sup>(9)</sup> A7 E7

49

Vln 1

Vln 2

Pno

A7 Dm C Gm9 Bb/Ab Gm7 C11 F A7/E Dm C Db/B C/Bb Am7 A11 G/F Eb<sup>A</sup> Dm

57

**C**

rit.....

Vln 1

Vln 2

Pno

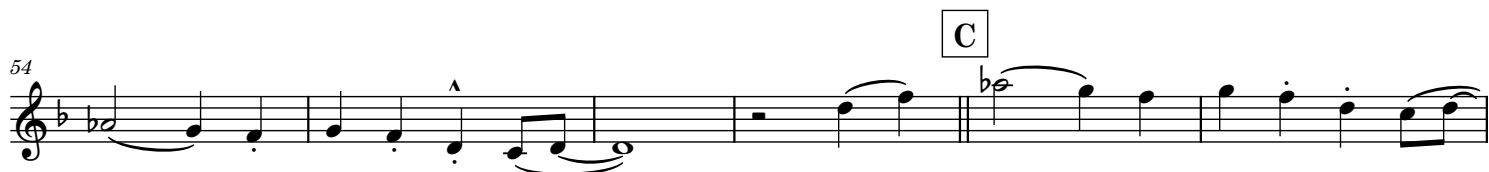
Dm Db/B C/Bb Am7 A11 G/F Eb<sup>A</sup> Dm Dm Db/B C/Bb Am7 A11 G/F Eb<sup>A</sup> Dm

# Violin 1

This arrangement is based on S.A.'s own. Soloes are played before C = Coda.  
Use Svends Blowing Chords

## Nadja

Svend Asmussen



Violin 2

# Nadja

This arrangement is based on S.A.'s own. Soloes are played before C = Coda. Use Svends Blowing Chords

Svend Asmussen

7

A

13

20

1. 2.

B

26

32

38

A

45

52

C

59

rit.....

Piano

# Nadja

This arrangement is based on S.A.'s own. Soloes are played before C = Coda. Use Svends Blowing Chords

Svend Asmussen

Chords: Dm /C /B Bb Dm/A Bb/Ab A/G A Dm /C

mp mp mp simile

Chords: /B Bb A Bb/E A N.C. A Bb Dm/B Bb Dm/A Gm7 Dm/F E<sup>o</sup>

**A**

6

Chords: Dm Dm /F Dm N.C. E13<sup>(b9)</sup> E7<sup>(b9)</sup> A7 E7 A7 Dm C Gm9 C Bb/Ab

12

Chords: Gm7 C11 F A7/E Dm /C Db/B C/Bb Bb Am7 A11 G11 G/F Eb<sup>Δ</sup>

18

Chords: Dm N.C. Dm N.C. Gm D+ Gm7 C13<sup>(b9)</sup> C#<sup>o</sup> Dm A+ Dm7 Am7 Bb/G#

1. 2.

**B**

24

30 A E7(b5) A7 Dm A7 Dm A7 D7(b9) Gm Am Gm D7 Gm E7(b9) E7 FΔ E+7 Eb13

37 D7(b9) Gm D+ Gm7 C13(b9) C#o Dm Bb7 A N.C. **A** Dm/B Bb

43 Dm/A Gm7 Dm/F Eo Dm Dm /F Dm N.C. E7(b9) E7(b9) A7 E7

49 A7 Dm C Gm9 Bb/Ab Gm7 C11 F A7/E Dm /C Db/B C/Bb

55 Am7 A11 G/F EbΔ Dm Dm Db/B C/Bb Am7 A11 **C**

60 G/F EbΔ Dm Dm rit..... Db/B C/Bb Am7 A11 G/F EbΔ Dm

# Blowing Chords

# Nadja

Svend Asmussen

**A**

4 Dm E $\emptyset$  A7 Dm

5 Dm E7 A7 E7 A7

9 Gm7 C7 F A7 Dm

13 Bb7(b5) A7 1. Dm A7 2. Dm D7

**B**

17 Gm Dm

21 A7 Bb7(b5) A7 Dm D7

25 Gm Gm7 E7 F E7 Eb7 D7

29 Gm Gm7 C7 F Bb/Ab A7

**A**

33 Dm E $\emptyset$  A7 Dm Dm E7

39 A7 E7 A7 Gm7 C7 F A7 Dm

45 Bb7(b5) A7 Dm